

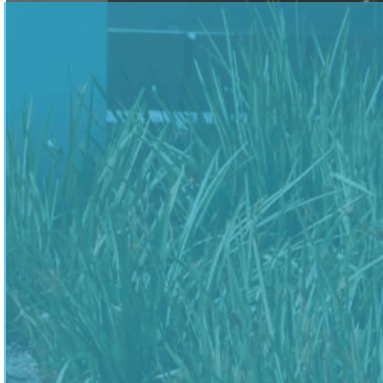
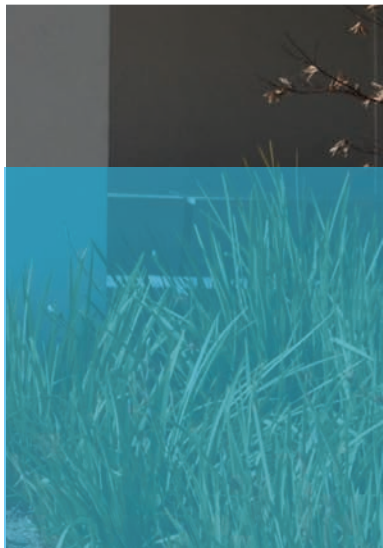
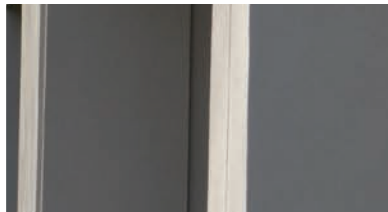


Measure G Quarterly Bond Progress Update

May 13, 2013

Table of Contents

Section I. Projects in Progress	3
Section II. Future/Planning Projects.....	11
Section III. Financial Summary.....	13
Section IV. Completed Projects	21
Section V. Master Program Schedule	27



I. Projects in Progress

Fine Arts Remodel – Building 1300

Project Overview

Architect	TBP Architects
Contractor	D.L. Falk Construction, Inc.

Project Status

As planned, Building 1300 successfully celebrated its Dedication on April 27, 2013. Construction is approximately 87% complete and the installation of furniture, fixtures, and equipment (FF&E) stands at 70% complete. The project is wrapping-up the final installation of finishes and cabinetry. In the coming weeks, the project will begin the Testing and Commissioning phase of the building's mechanical, electrical, and low voltage systems. Building 1300 is scheduled to open for the summer session.

Administration Building Renovation – Building 600

Project Overview

Architect	Henley & Associates
Lease-leaseback Contractor	TBD
Swing Space Design Team	Dreyfuss & Blackford Architects

Project Status

Following a detailed review of alternative delivery methods suitable for this project, District reached a decision to move forward with the Lease-Leaseback delivery option. Request for Qualifications to provide Lease-Leaseback services was issued in April and Statement of Qualifications from interested contractors is due May 17, 2013. A selection committee will complete a short list and interview the most qualified contractors. District recommendation for preconstruction services contract award is scheduled for approval at the July 17, 2013 Board meeting.

Project overall design phase is 25% complete as the Project Subcommittee evaluates options for building expansion. It is anticipated that this project will be submitted to DSA in Fall 2013 with construction start in March, 2014 and completion by November/December 2014.

Building is scheduled for abatement and selective demolition work to commence first week of July following June 19th Board approval of the bid and contract. Completion is scheduled for August, 2013 at which time the Lease-leaseback contractor team will be fully engaged.

Administrative offices swing space programming is complete and floor plan design has been reviewed and approved by the District. Lease agreement details have been developed and are being brought to the Board for approval at the May 15, 2013 meeting. Users are scheduled to occupy their swing space by the end of June, 2013.

Child Development Center (Building 200A/B Expansion) – Building 202

Project Overview

Architect	Architectural Concepts
Contractor	TBD

Project Status

Contractor prequalification process was completed in March and this project is currently in bidding phase. A pre-bid conference is scheduled for May 16, 2013 with bids from prequalified contractors due on May 29, 2013. Board approval of the selected bid is scheduled for June 19, 2013 and construction start in early July for completion by December 2013. Space planners are addressing the furniture and equipment needs with building users and will move forward with the procurement phase in the upcoming months.

Vacaville Center Parking Lot Expansion

Project Overview

Architect	Henley & Associates
Contractor	TBD

Project Status

Project construction documents were completed and submitted to Department of State Architecture (DSA) on May 2, 2013. Coordination efforts with District's Photo Voltaic team are in progress to ensure necessary schedule coordination. The team accelerated the start of project bid phase to meet the Solar project schedule requirements. DSA approval is anticipated for the end of June.

Vallejo Center Parking Lot Expansion

Project Overview

Architect	Henley & Associates
Contractor	Grade Tech, Inc.

Project Status

The new parking lot has been in use by students and staff. Project is in the close-out phase.

Cosmetology – Building 1600 Renovation/Equipment

Project Overview

Architect	TBD
Contractor	TBD

Project Status

Majority of existing building upgrades including fire alarm work for this building are complete. Project is being evaluated for additional scope completion in relation to Facilities Master Plan outlined efforts for this building.

Upgrade Security/Exterior Lighting

Project Overview

Architect	N/A
Contractor	Technical Business Solutions

Project Status

Project close-out phase is moving forward and is scheduled for completion by summer.

Equipment Maintenance/Warehouse – Building 1900 Renovation

Project Overview

Architect	TBD
Contractor	TBD

Project Status

Project is being evaluated for additional scope completion in relation to Facilities Master Plan outlined efforts for this building.

Campus-wide Landscaping (Improvements)

Project Overview

Architect	RHAA Landscape Architects
Contractor	District Completed

Project Status

Building 1300 Phase I landscape plan and construction was completed in preparation of the grand opening in April. A complete landscape plan will be developed in conjunction with the Facilities Master Plan landscape guidelines.

Campus-wide Technology Upgrade, Phase II

Project Overview

Architect	N/A
Contractor	IDF

Status

This is a District IT project and the purchase and installation of new servers is on-going. Expect to complete work by year end 2013.

CTE Lab Renovation

Project Overview

Architect	TBD
Contractor	TBD

Status

Project is being evaluated for additional scope completion in relation to Facilities Master Plan outlined efforts for this building.

Building 100 Renovation/Equipment

Project Overview

Architect	N/A
Contractor	Keller Engineering

Status

This project included essential updates to the building including building repair work and equipment. This work is now 100% completed and close out is in progress.

Portables Demolition

Project Overview

Architect	TBD
Contractor	TBD

Status

The scope of this project includes demolition of three portable buildings, noted as Buildings 1100. Currently, these building are utilized as swing space and storage for Fine Arts classrooms and staff offices. These building are scheduled for demolition following Building 1300 Fine Arts renovation completion and full occupancy. Demolition is scheduled to commence in August 2013.

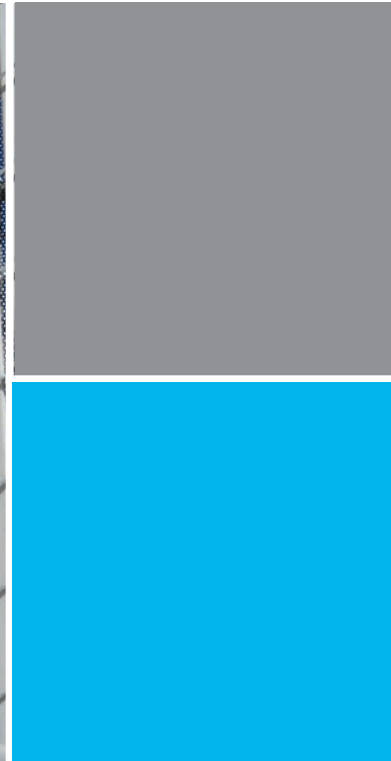
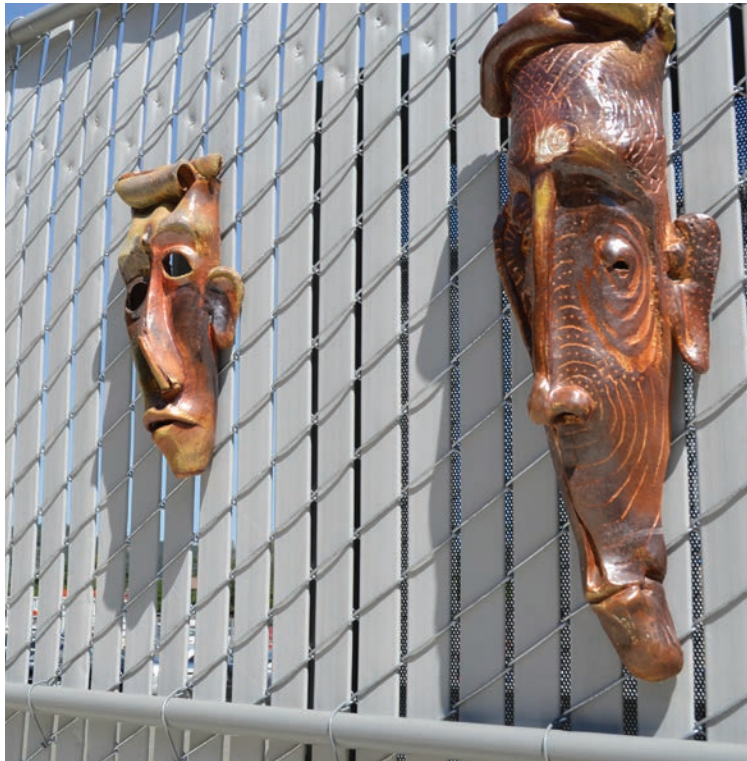
Alternative Energy Project

Project Overview

Architect	ATI
Contractor	Sunpower

Status

This project includes design and installation of solar panels at the Vallejo and Vacaville Center parking lots and the main campus in Fairfield North & South parking lots. Currently, Vallejo Center parking lot work is 60% complete and is scheduled for completion over summer. Vacaville Center parking lot solar panels installation will be carefully coordinated with the actual parking lot expansion construction work and is scheduled for completion by the end of Fall 2013.



This page has been intentionally left blank.

II. Future/Planned Projects

The following list consists of projects that are under consideration as future Measure G Bond projects and are being evaluated by the District for prioritization of bond funds:

- ▶ Vallejo Center Entry Way Signage
- ▶ Vacaville Center Entry Way Signage
- ▶ Building 600 Expansion Options

This page has been intentionally left blank.

III. Financial Summary



QUARTERLY BOND PROGRESS UPDATE FINANCIAL SUMMARY
May 13, 2013
(Financials As Of 3rd Quarter Close 3.31.13 FY 2012-13)

SECTION I: PROJECTS IN PROGRESS						
PROJECT NUMBER *	PROJECT NAME	CURRENT PROJECT BUDGET	Q2 PROJECT BUDGET (12.31.12)	PROJECT BUDGET VARIANCE	EXPENDITURES TO DATE (3.31.13)	CURRENT PROJECT BUDGET BALANCE
24	Bldg 1000 Renovation/Equip (Formally Bldg 900)	\$ 110,000	\$ 100,000	\$ 10,000	\$ 108,019	\$ 1,981
26	Bldg 1300 Remodel Fine Arts	\$ 6,064,166	\$ 6,064,166	\$ -	\$ 3,650,166	\$ 2,414,000
28	Bldg 1600 Renovation/Equip	\$ 328,678	\$ 328,678	\$ -	\$ 33,802	\$ 294,876
32	Bldg 202- Child Development Center Expansion	\$ 945,262	\$ 945,262	\$ -	\$ 195,576	\$ 749,686
34	Bldg 1900 Renovation/Equip	\$ 540,745	\$ 540,745	\$ -	\$ 339,572	\$ 201,173
36	Security Systems Upgrade	\$ 245,000	\$ 241,000	\$ 4,000	\$ 241,530	\$ 3,470
39	Campus Wide Landscape	\$ 199,470	\$ 199,470	\$ -	\$ 48,893	\$ 150,577
40	Bldg 600 Renovation/Equip	\$ 5,970,720	\$ 5,970,720	\$ -	\$ 178,347	\$ 5,792,373
45	Campus-wide Technology Upgrade, Phase II	\$ 316,421	\$ 316,421	\$ -	\$ 43,184	\$ 273,237
N36	Vallejo Parking Expansion	\$ 1,300,000	\$ 1,300,000	\$ -	\$ 1,196,480	\$ 103,520
N37	CTE Lab Renovation	\$ 272,335	\$ 272,335	\$ -	\$ 139,638	\$ 132,697
N39	Vacaville Parking Lot Expansion	\$ 1,351,000	\$ 1,351,000	\$ -	\$ 42,664	\$ 1,308,336
37	Portables Demolition	\$ 50,000	\$ 50,000	\$ -	\$ -	\$ 50,000
N38	Alternative Energy Project	\$ 500,000	\$ 500,000	\$ -	\$ -	\$ 500,000
	Overall Program Costs	\$ 2,536,407	\$ 2,536,407	\$ -	\$ 988,184	\$ 1,548,223
	Misc. Classroom Upgrades	\$ 300,000	\$ 235,000	\$ 65,000	\$ 265,378	\$ 34,622
	<i>Unallocated Funds</i>	\$ 775,546	\$ 854,546	\$ (79,000)	\$ -	\$ 775,546
	PROJECTS IN PROGRESS SUBTOTAL	\$ 21,805,750	\$ 21,805,750	\$ -	\$ 7,471,433	\$ 14,334,317

FOOTNOTES

* Project numbers indicate the original Measure G Bond project numbers as presented and approved by the Board in 2002.

"N" projects were added due to timing, critical need and/or funding amount, by the District.

Misc. Classroom Upgrades project includes Vacaville and Vallejo Center additional project needs, Bldg 200 upgrades, Sports Complex & Utility Infrastructure minor upgrades on the Main Campus.

BOND PROGRAM REVENUE SUMMARY	
Measure G Bonds (Series A & B)	\$ 124,500,000
Bond Defeasance (Refinance February 2005)	\$ 8,498,361
Bond Interest	\$ 15,474,423
Other Income	\$ 1,744,201
TOTAL REVENUE	\$ 150,216,985
BOND PROGRAM REVENUES & EXPENDITURES SUMMARY	
Total Completed Projects (Section I)	\$ 128,411,235
Total Projects in Progress (Section II)	\$ 21,805,750
GRAND TOTAL	\$ 150,216,985

This page has been intentionally left blank.

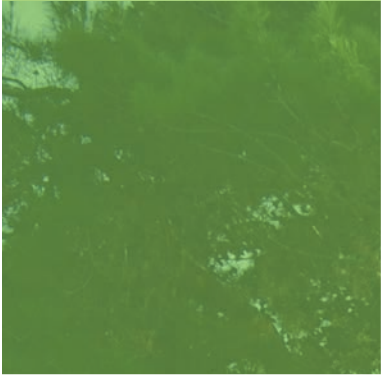
QUARTERLY BOND PROGRESS UPDATE FINANCIAL SUMMARY
May 13, 2013
(Financials as of 3rd Quarter Close 3.31.12 - FY 2012/13)

SECTION II: COMPLETED PROJECTS				
<i>Projects are sorted by construction value</i>				
PROJECT NUMBER*	PROJECT NAME	ADJUSTED PROJECT BUDGET **	PROJECT COST AT COMPLETION ***	COMMENTS
3,10,11&12	Vallejo Center	\$ 22,495,637.00	\$ 23,894,821	Project scope and budget includes original bond list projects 3 - Site Property Acquisition, 10 - Off Site, 11 - On Site, 12 - Center Design and Construction.
7,8 & 9	Vacaville Center	\$ 24,378,402	\$ 20,450,873	Project scope and budget includes original bond list projects 7- Center Off Site; 8 - On Site; 9-Design and Construction.
1	Bldg 400 - Student Services Center	\$ 15,474,099	\$ 15,457,496	Project completed Winter 2008.
29	Bldg 1700 A & B Renovation/Equip.	\$ 14,565,949	\$ 14,768,058	Scope of work includes renovation of Building 1700A and a new Adaptive P.E. Bldg. (1700B). Original bond list included scope and budget for 1700A only and 1700B was a separate project (labeled as #18). Adjusted budget was created to combine the two projects and it also addressed owner initiated scope changes (noted in the project cost at completion).
-	Overall Program Costs	\$ 8,500,000	\$ 8,500,000	This project line item includes various planning efforts, assessments, studies, surveys, drawings printing and PM/CM services as part of the overall program for completed projects. Original project list did not include this as a separate line item and budget.
4,22 & 23	Building 700 & 800 Annex	\$ 7,824,333	\$ 8,350,623	Project scope and budget includes original list projects #4, 22 & 23. Approved by the Steering Committee fo rincreased budget to cover full renovation of the Annex. Project completed in Spring 2008.
13 & 14	Bldg 1400 Modernization & Kitchen Replacement	\$ 5,781,807	\$ 6,985,498	Project scope included building 1400 Modernization and essential kitchen function replacements.
30 & 31	Bldg 1800 A & B Renovation/Equip	\$ 6,148,856	\$ 6,421,275	Project scope and budget included renovation and equipment for Building 1800 A & B (original projects 30 & 31). Increased in budget due to increase in scope, as well as inclusion of interim housing needed during renovation and addition of Building 2600) .
38	Police and Public Services	\$ 59,683	\$ 59,683	Project addressed interim solution upgrades. Project re-prioritized, funds redistributed to other projects, and a new facility to be included in 2012 bond.
15 & 16	Utility Infrastructure Phase I & II (Hydronics)	\$ 6,617,346	\$ 5,911,348	Original projects 15 & 16 combined in one scope and budget; Major scope of work included campus wide utility infrastructure upgrades as well as boiler replacement and chiller addition.
17 & 18	Sports Complex - Phase I & II	\$ 4,983,055	\$ 5,435,697	Original project listincluded Phase I and II for the Sports Complex. Adjusted and completed scope and budget includes Phase I only. Phase II scope and budget was completed as noted in project # 29 to address Building 1800B Addition.
-	Campus-wide Technology Upgrade, Phase I	\$ 2,675,086	\$ 2,675,086	Project included campus wide technology upgrades. This Phase I work was completed in September, 2012. Individual projects will address project specific technology needs.
20	Bldg 300 Renovation/Equip	\$ 2,036,878	\$ 2,184,337	Renovation of the Science Building, completed Winter 2006.
2	Bldg 100 - Library (Interim Remodel)	\$ 5,101,763	\$ 2,133,136	Interim remodel of the Library to address needed upgrades in the building; project completed in Summer, 2009. Complete Library renovation was prioritized to receive State funding for complete project renovation.
21	Bldg 500 Renovation/Equip	\$ 1,801,998	\$ 1,930,904	Project completed in Winter 2006 (Business Building renovation).
27	Bldg 1500 Renovation/Equip.	\$ 1,121,053	\$ 1,203,835	Project completed in Winter 2006 (Math/Engineering building renovation).
41 & 35 + N31 +N34	College Infrastructure	\$ 846,055	\$ 561,160	Scope of work includes essential projects such as irrigation replacement, hot water valves, motor control center, tennis couly lighting, master clock system replacement;combined with original list project #35. Also included in adjusted scope and budget are projects N31 - SID System Replacement; N34 - Bat Exclusion.
5 & 6	ADA Phase I & II	\$ 358,887	\$ 407,979	Projects 5&6 combined in scope and budget. This project addressed a removal of campus wide ADA barriers. As part of individual projects, additional ADA barriers will need to be addressed.
25	Bldg 1200 Renovation/Equip (Interim Remodel)	\$ 337,582	\$ 337,582	Project completed Spring 2010. Scope and budget reflect interim remodel of the building as the full renovation is a seperate State funded project.
33	Nut Tree	\$ 268,842	\$ 268,842	Original project list did not have a budget for Nut Tree project, hence it is at 0.
N13	Campus Wide Exterior Painting (Fairfield)	\$ 91,161	\$ 91,161	
42	Bldg 2112 Stadium Renovation/Track	\$ 425,530	\$ 69,670	Project completed in Spring 2011.
N3	Campus Wide Signage In-House Study	\$ 18,383	\$ 18,383	Project completed in Spring 2012 to address needed campus way finding and signage.
N25	Bldg. 300 (2) Science Rooms & Cadaver Room Vent	\$ 300,491	\$ 293,787	Upgrades to this building have been completed as of December 2012.
	COMPLETED PROJECTS TOTAL	\$ 132,212,876	\$ 128,411,235	

FOOTNOTES

* Project numbers indicate the original Measure G Bond project numbers as presented and approved by the Board in 2002.
 ** Adjusted Project Budget - data derived from the latest rebenchmarked bond report for completed projects, dated March 31, 2010.
 *** Project Cost at Completion & Spent to date figures based on Fiscal Services Expenditures report as of September 30, 2012.
 "N" projects were added due to timing, critical need and/or funding amount, by the District.
 No projects were moved from "In Progress" to "Completed" for this Quarter Progress Update

This page has been intentionally left blank.



IV. Completed Projects

Projects are listed by construction value

Vallejo Center

Architect:	KMD Architecture, Inc.
Contractor:	Ralph Larson & Sons
Project Completed:	September 2007
Final Cost:	\$23,894,821

Vacaville Center

Architect:	KMD Architecture, Inc.
Contractor:	Roebbelen Contracting Inc.
Project Completed:	May 2010
Final Cost:	\$20,450,873

Student Services Center – Building 400

Architect:	LPA Architecture, Inc.
Contractor:	W.A. Thomas, Inc.
Project Completed:	February 2008
Final Cost:	\$15,457,496

Gymnasium Renovation & Adaptive PE Addition – Building 1700A & B

Architect:	TLCD Architecture, Inc.
Contractor:	Alten Construction
Project Completed:	January 2009
Final Cost:	\$14,768,058

Building 700 & 800 Annex

Architect:	Steinberg Architects
Contractor:	J.W. & Sons
Project Completed:	January 2006
Final Cost:	\$8,350,623

Student Union & Bookstore Modernization – Building 1400

Architect:	TLCD Architecture, Inc.
Contractor:	J. W. & Sons
Project Completed:	April 2009
Final Cost:	\$6,985,498

Building 1800A & B Renovation

Architect:	TLCD Architecture, Inc.
Contractor:	J. W. & Sons
Project Completed:	1800B – Summer 2005; 1800 A – Summer 2009
Final Cost:	\$6,480,958

Utility Infrastructure Phase I & II (Hydronics)

Architect:	Turley & Associates
Contractor:	Bell Products
Project Completed:	February 2007
Final Cost:	\$5,911,348

Sports Complex Phase I & II

Architect:	CMX Sports Engineering/TLCD Architecture, Inc.
Contractor:	Valley Crest
Project Completed:	August 2009
Final Cost:	\$5,435,697

Campus-wide Technology Upgrade Phase I

Architect:	N/A
Contractor:	District IT Department coordinated work
Project Completed:	September 2012
Final Cost:	\$2,675,086

Building 300 Renovation/Equipment

Architect	Dreyfuss & Blackford
Contractor	Alten Construction
Project Completed	January 2006
Final Cost	\$2,184,337

Building 100 (Interim Remodel)

Architect	TBP Architects
Contractor	Solano Roofing
Project Completed	Fall 2010
Final Cost	\$2,133,136

Building 500 Renovation/Equipment

Architect	Dreyfuss & Blackford
Contractor	Alten Construction
Project Completed	January 2006
Final Cost	\$1,930,904

Building 1500 Renovation/Equipment

Architect	Dreyfuss & Blackford
Contractor	Alten Construction
Project Completed	January 2006
Final Cost	\$1,203,835

College Infrastructure

Architect	Turley & Associates
Contractor	Bell Construction
Project Completed	September 2005
Final Cost	\$561,160

ADA Phase I & II

Architect	George Dedekian Architects
Contractor	K&L Grading & Paving
Project Completed	May 2007
Final Cost	\$407,979

Building 1200 Renovation (Interim Remodel)

Architect	TBP Architects
Contractor	Solano Roofing
Project Completed	Fall 2010
Final Cost	\$337,582

Nut Tree Project

Architect	Dreyfuss & Blackford
Contractor	Kendridge Builders
Project Completed	August 2006
Final Cost	\$268,842

Campus-wide Exterior Painting

Architect	N/A
Contractor	District Project
Project Completed	Fall 2011
Final Cost	\$91,161

Stadium Renovation/Track – Building 2500

Architect	N/A
Contractor	Keller Engineering
Project Completed	May 2011
Final Cost	\$69,670

Campus-wide Signage Study

Architect	In-house Study
Contractor	Weidner
Project Completed	March 2012
Final Cost	\$18,383

Two Science Room Ventilation – Building 300

Architect	District Project
Contractor	District Project
Project Completed	December 2012
Final Cost	\$293,787

This page has been intentionally left blank.

V. Master Program Schedule



Solano Community College District
Measure G Project Schedule

Project Name	Start	Finish	2013												2014												2015											
			J	A	S	O	N	D	J	F	M	A	M	J	Jul	A	S	O	N	D	J	F	M	A	M	J	Jul	A	S	O	N	D	J	F	M	A	M	J
Solano Community College District	05-Apr-12 A	06-Jan-15																																				
Security Cameras	21-Aug-12 A	09-May-13	SCCD - Security Cameras																																			
Fine Arts - Bldg 1300	05-Apr-12 A	30-Sep-13	SCCD - Fine Arts - Bldg 1300																																			
Fine Arts Swing Space Move - Bldg 1300	20-May-13	28-May-13	SCCD - Fine Arts Swing Space Move - Bldg 1300																																			
Child Development - Bldgs 200 / 202	24-Sep-12 A	14-Apr-14	SCCD - Child Development - Bldgs 200/202																																			
Vallejo Center Parking Expansion	04-Jun-12 A	04-Sep-13	SCCD - Vallejo Center Parking Expansion																																			
Administration Renovation - Bldg 600	04-Sep-12 A	06-Jan-15	SCCD - Administration Renovation																																			
Swing Space - Bldg 600	15-Jun-13	15-Dec-14	SCCD - Swing Space - Bldg 600																																			
Vacaville Center Parking Expansion	24-Sep-12 A	15-Feb-14	SCCD - Vacaville Center Parking Expansion																																			
Portables Demolition - Bldg 1000	15-Apr-13 A	08-Apr-14	SCCD - Portables Demolition - Bldg 1000																																			

Data Date: 01-May-13
Run Date: 07-May-13
Layout: - Proj Summary SCCD
Filters: TASK filter: - Summ Project
Status:

© Primavera Systems, Inc.

RFP (Black bar)
Design (Red bar)
DSA (Green bar)
Bid (Orange bar)
Construction (Blue bar)
Closeout (Light Blue bar)

Swing Space (Black bar)

KITCHELL
Solano Community College District
Measure G Project Schedule
SCHEDULE DATED: 01-May-13



Solano Community College District
Measure G Project Schedule

Activity Name	Start	Finish	Rem Dur	2015												
				A	M	J	J	A	S	O	N	D	J	F	M	A
Solano Community College District																
Security Cameras	05-Apr-12 A	06-Jan-15	616													
SCCD Security Cameras	21-Aug-12 A	09-May-13	9													
Construction	21-Aug-12 A	18-Dec-12 A	0													
Closeout	19-Dec-12 A	09-May-13	9													
Fine Arts - Bldg 1300	05-Apr-12 A	30-Sep-13	153													
SCCD - Fine Arts - Bldg 1300	05-Apr-12 A	30-Sep-13	153													
Construction	05-Apr-12 A	03-Jun-13	34													
Closeout	04-Jun-13	30-Sep-13	119													
Fine Arts Swing Space Move - Bldg 1300	20-May-13	28-May-13	6													
SCCD - Fine Arts Swing Space Move - Bldg 1300	20-May-13	28-May-13	9													
Swing Space	20-May-13	28-May-13	9													
Equipment Move- Bldg 1300	20-May-13*	20-May-13	1													
Faculty / Staff Move- Bldg 1300	28-May-13*	28-May-13	1													
Child Development - Bldgs 200 / 202	24-Sep-12 A	14-Apr-14	342													
SCCD - Child Development - Bldgs 200/202	24-Sep-12 A	14-Apr-14	342													
DSA	24-Sep-12 A	21-Dec-12 A	0													
Bid	08-Jan-13 A	29-Jun-13	53													
Construction	01-Jul-13	15-Dec-13	168													
Closeout	16-Dec-13	14-Apr-14	120													
Vallejo Center Parking Expansion	04-Jun-12 A	04-Sep-13	127													
SCCD - Vallejo Center Parking Expansion	04-Jun-12 A	04-Sep-13	127													
Construction	04-Jun-12 A	16-Nov-12 A	0													
Closeout	29-Apr-13 A	04-Sep-13	127													
Administration Renovation - Bldg 600	04-Sep-12 A	06-Jan-15	616													
SCCD - Administration Renovation - Bldg 600	04-Sep-12 A	06-Jan-15	616													
Design	04-Sep-12 A	13-Sep-13	136													
DSA	16-Sep-13	27-Jan-14	134													

Data Date: 01-May-13
Run Date: 08-May-13
Layout: - Proj Summary SCCD - Detail
Filters: TASK filter: - Summ Project
Status:


KITCHELL

Solano Community College District
Measure G Project Schedule

SCHEDULE DATED: 01-May-13

Summary
 RFP
 Design
 DSA
 Bid
 Construction

Closeout
 Swing Space



Solano Community College District
Measure G Project Schedule

Activity Name	Start	Finish	Rem Dur	2013												2014												2015											
				A	M	J	J	A	S	O	N	D	J	F	M	A	M	J	J	A	S	O	N	D	J	F	M	A	M	J	J	A							
Lease-Leaseback Team Efforts	01-Aug-13	14-Mar-14	226	Lease-Leaseback Team Efforts																																			
Construction	21-Mar-14	15-Dec-14	270													Construction																							
Closeout	06-Nov-14	06-Jan-15	62													Closeout																							
Swing Space - Bldg 600	15-Jun-13	15-Dec-14	549													Construction																							
SCCD - Swing Space - Bldg 600	15-Jun-13	15-Dec-14	549													SCCD - Swing Space - Bldg																							
Swing Space	15-Jun-13	15-Dec-14	549													Swing Space																							
Vacaville Center Parking Expansion	24-Sep-12 A	15-Feb-14	291													SCCD - Vacaville Center Parking Expansion																							
SCCD - Vacaville Center Parking Expansion	24-Sep-12 A	15-Feb-14	291													SCCD - Vacaville Center Parking Expansion																							
RFP	24-Sep-12 A	31-Oct-12 A	0																																				
Design	01-Oct-12 A	30-Apr-13 A	0	Design																																			
DSA	02-May-13	19-Jun-13	49	DSA																																			
Bid	08-Apr-13 A	19-Jun-13	50	Bid																																			
Construction	20-Jun-13	17-Dec-13	181	Construction																																			
Closeout	18-Dec-13	15-Feb-14	60	Closeout																																			
Portables Demolition - Bldg 1000	15-Apr-13 A	08-Apr-14	343													SCCD - Portables Demo - Bldg 1000																							
SCCD - Portables Demo - Bldg 1000	15-Apr-13 A	08-Apr-14	343													SCCD - Portables Demo - Bldg 1000																							
Design	15-Apr-13 A	30-May-13	30	Design																																			
Bid	31-May-13	17-Jul-13	48	Bid																																			
Construction	18-Jul-13	21-Nov-13	127	Construction																																			
Closeout	22-Nov-13	08-Apr-14	138	Closeout																																			



This page has been intentionally left blank.

